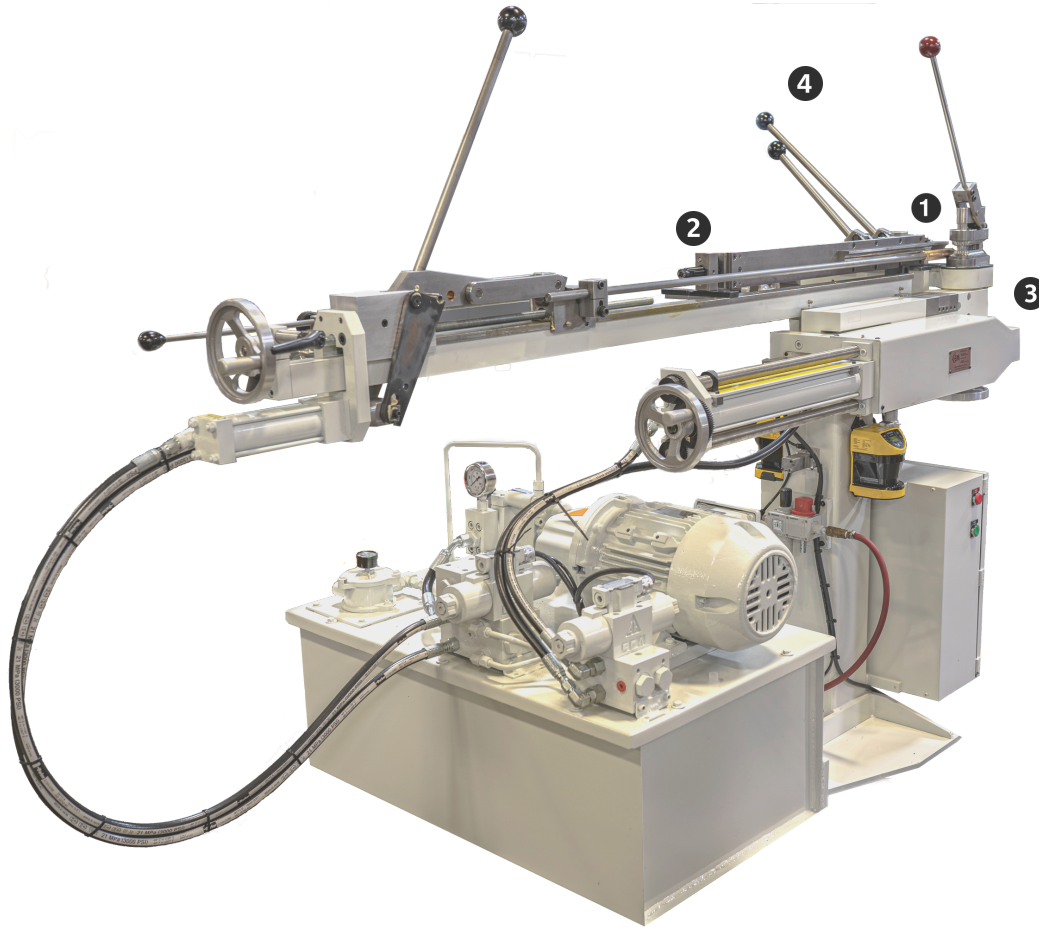


# CARSON ENGINEERING

## HPA SERIES TUBE BENDER



Scan here for video

1. Capacity of up to 2 1/8" O.D. tube.
2. Internal support mandrel with automatic extraction after bend.
3. Capable of bending multiple tubes per cycle in some smaller tube sizes.
4. Degree of bend can be set 0 to 185 degrees.

Currently offering three models of benders - The HPA-1A, HPA-2A, & HPA-2B.

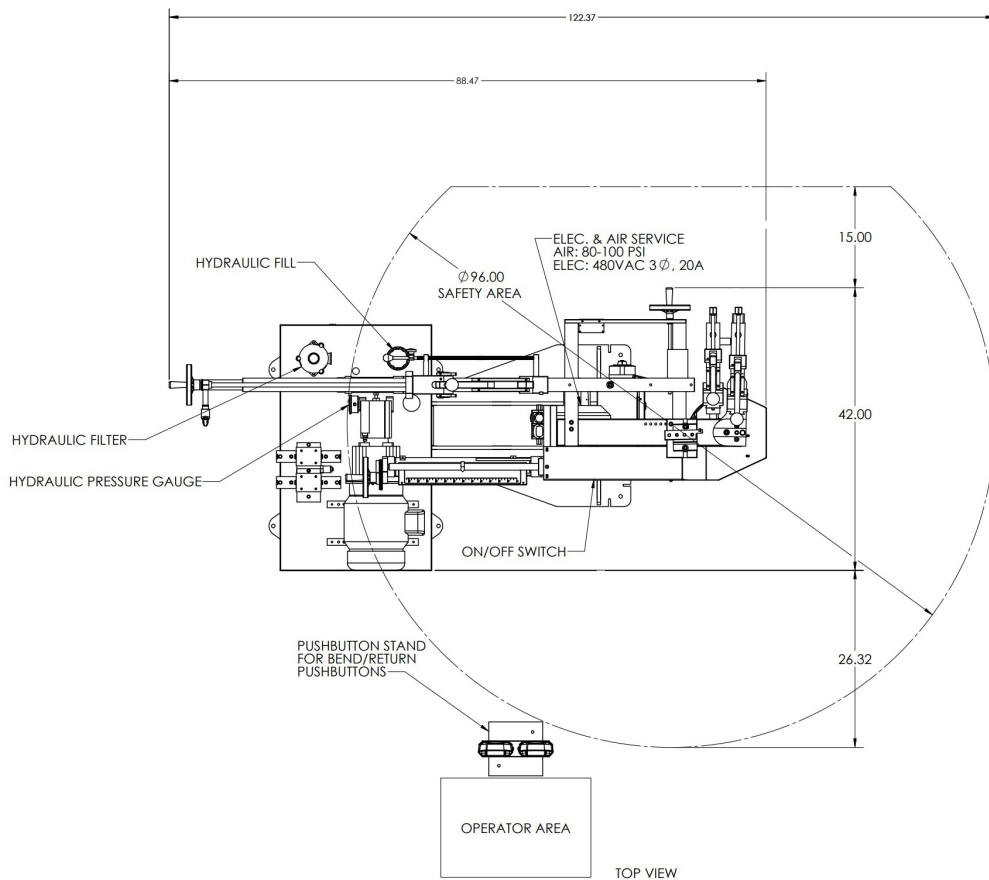
The Model HPA-1A and the larger Model HPA-2A utilize a hydraulic power cylinder for bending. These machines have been proving themselves in production tube shops since 1978. The HPA tube benders are rugged and versatile, both models feature "quick change" tooling for maximum productivity. Carson Engineering offers a wide variety of tooling options for our benders. Tools can be supplied for bending single tubes or up to three tubes per cycle on 1/2" O.D. and smaller tubes. We build tooling to bend with an internal support mandrel or tools for "mandrel-less" bending. We have a selection of adjustable bend locators and can also offer design and build of locators and check gages for specific work pieces.

# CARSON HPA-2B

## TUBE BENDER



The Carson model HPA-2B is a semi-automatic rotary-draw bending machine that is suited to bending copper, aluminum, and steel tubing. This machine is hand loading and features a hydraulic powered bend arm, automatic mandrel extractor, wiper die, and integrated safety. Although it is equipped with an automatic mandrel extractor, a mandrel is not required for all bends. It also has quick change tooling which translates into minimum down time between jobs. The capacity of the #HPA-2B is up to 2 1/8" O.D. copper tube and bent to any angle between 0° to 180°.



FEATURES	SPECIFICATIONS	
<ul style="list-style-type: none"> <li>CAN BE CONFIGURED IN EITHER RIGHT HAND OR LEFT HAND OPERATION</li> <li>UP TO 2 1/8" O.D. TUBE CAPACITY, CAN BE BENT FROM 0° to 180° DEGREES</li> <li>QUICK AND EASY TOOLING CHANGEOVER TIME</li> <li>AREA SAFETY LASER SCANNER CONFIGURED INTO MACHINE ALLOWS FOR DETECTION OF ANY INTRUSION OF EITHER A PERSON OR OBJECT INTO SPECIFIED AREA</li> </ul>	<ul style="list-style-type: none"> <li>COLORS</li> <li>MINIMUM DEGREE BEND</li> <li>MAXIMUM DEGREE BEND</li> <li>WEIGHT</li> <li>FOOTPRINT (L x W)</li> <li>ELECTRICAL POWER</li> <li>HYDRAULIC SYSTEM</li> <li>BASE</li> </ul>	<ul style="list-style-type: none"> <li>- RAL</li> <li>- 0 DEGREES</li> <li>- 180 DEGREES</li> <li>- 1500LBS</li> <li>- 123" x 84"</li> <li>- 3 PHASE, 480V</li> <li>- 20 GALLON, 6GPM, 5HP</li> <li>- CAN BE BOLTED DOWN</li> </ul>